

**SERVICE BULLETIN:**  
SBA0267

**YEAR(S) AFFECTED:**  
2005 - 2007

**PRODUCT(S) AFFECTED:**  
Bounder

**MODEL(S) AFFECTED:**  
35 E

**SUBJECT:**  
Flush Floor  
Slide-Out

**KEYWORDS:**  
Slide-Out, Flush  
Floor, Slide,  
Slideout, Lift  
Block

**ISSUE DATE:**  
September 2006

The purpose of this bulletin is to provide Fleetwood dealers with a procedure to reduce the load on the flush floor slide-out motor during the initial closing of the slide-out room.

**NOTE:** Read this entire procedure before beginning work.

**CONDITION:**

The Bounder E model flush floor slide-out room motor may stop during retraction and prevent the slide-out room from closing.

1. Park the motor home on flat level surface. Verify the area is clear of obstructions that may interfere with extension of the slide-out room.
2. Put the transmission into park and set the parking brake.
3. Operate the motor home levelers to provide stability without lifting the motor home.
4. Extend the dinette-sofa-refrigerator slide-out room approximately halfway open.

**⚠ WARNING**

- REMOVE THE IGNITION KEY AND ATTACH A NOTICE TO THE IGNITION SWITCH IN ORDER TO PREVENT A THIRD PARTY FROM POWERING UP THE SYSTEM.
- PLACE A WARNING SIGN "DO NOT OPERATE" ON THE SLIDE-OUT ROOM CONTROL SWITCH TO PREVENT A THIRD PARTY FROM ACTIVATING THE SYSTEM.

5. Locate the slide-out room controllers, located in either in the Battery Control Center compartment, or on the bulkhead under the hood. Label and then disconnect the wires at the slide-out room controllers in order to prevent slide-out room activation during repairs.
6. Measure and mark the three locations for Lift Block installation. Working under the slide-out room, measure from the rear underside of the slide-out room and mark the steel tube below the aluminum slip plate at 6 and 31 inches. The forward Lift Block will be positioned at the front edge of the slide-out floor. See Figures 1, 2 and 5.

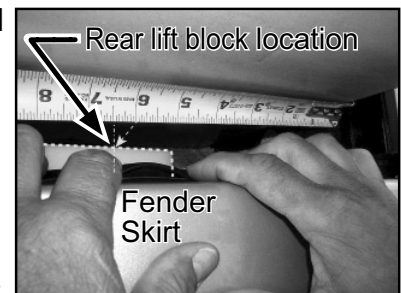


Figure 1



Figure 2

© 2006 Fleetwood Enterprises, Inc.

*This bulletin is supplied for technical information only and is not an authorization for repairs.*

Federal Law (Section 154 of the National Traffic and Motor Vehicle Safety Act of 1966) requires that: If you have received a notice of recall or failure to comply from Fleetwood or any component manufacturer, you must repair or otherwise correct the defects on vehicles remaining in your inventory, according to the notification, before selling or leasing the vehicles. Any vehicle lessor receiving this recall notice must forward a copy of the notice to the lessee within ten days.

"It is impossible to know, evaluate and advise the service trade of all conceivable ways in which service might be done or of the possible hazardous consequences of each way. Accordingly, anyone who uses a service procedure or tool must first assure that neither personal safety nor vehicle safety will be jeopardized by the selected service methods."

7. Pull the bulb/wiper seal away from the Lift Block installation areas to provide clearance and accessibility.
8. Use a Lift Block, #507559 with the predrilled holes as a drilling guide. See Figure 3. Position a Lift Block under and centered on the steel tube beneath the aluminum slip plate with the Lift Block also centered on the marks made in Step 6. See Figure 4. Hold a 1/8" thick steel plate or ceramic floor tile above the aluminum slip plate in the drilling area to protect the slide-out room floor. Drill 1/4" holes through the steel tube and aluminum slip plate. Use care to prevent damaging the bottom of the slide-out floor. Drill all six holes.

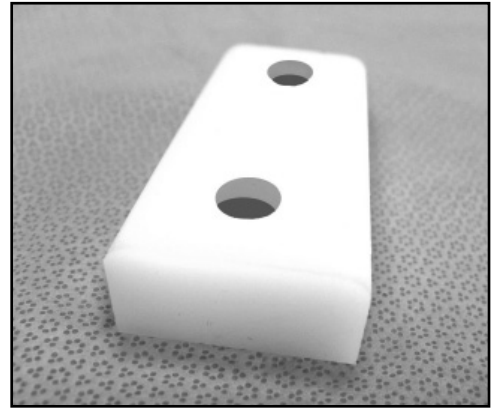


Figure 3

**NOTE:** One hole in the front Lift Block location will go through the mounting bracket of the slide-out mechanism as well as the steel tube and aluminum slip plate.

9. Enlarge the six 1/4" drilled holes going through the bottom side only of the steel tube to 5/8". This will allow a socket to reach into the steel tube from the bottom side.
10. Place two 10-24 X 1" Flat Head Phillips Screws, #500822, into each Lift Block and position over the drilled holes until the screws pass through the aluminum slip plate and the top of the steel tube. Install the Lift Blocks with the radius corners up. See Figures 5 and 6.
11. Attach a 1/4" washer, #099482, and a 10-24 Nylock Nut, #500823, to the bottom of each Lift Block installation screw. Use a 90 degree Phillips ratcheting screw driver and 3/8" deep socket with 1/4" drive ratchet and 4" extension to tighten all six Lift Block fasteners. See Figure 7 on Page 3 of this Bulletin.

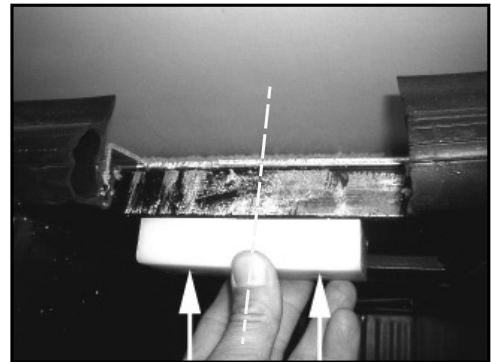


Figure 4

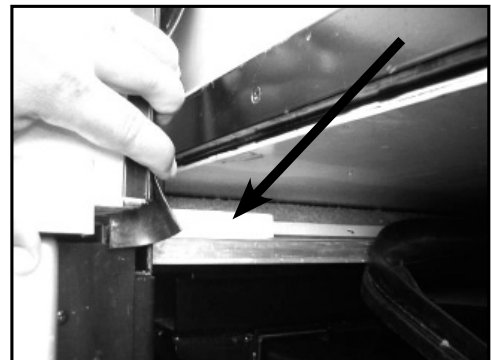


Figure 5

**NOTE:** The washers and nuts will be recessed into the bottom of the steel tube.

12. Reattach any seals that were removed in Step 7.
13. Reconnect the wires to the slide-out controllers.
14. Turn on the ignition switch and fully extend and retract the slide-out room several times to verify proper operation. Correct as necessary.



Figure 6

*This bulletin is supplied for technical information only and is not an authorization for repairs.*

Federal Law (Section 154 of the National Traffic and Motor Vehicle Safety Act of 1966) requires that: If you have received a notice of recall or failure to comply from Fleetwood or any component manufacturer, you must repair or otherwise correct the defects on vehicles remaining in your inventory, according to the notification, before selling or leasing the vehicles. Any vehicle lessor receiving this recall notice must forward a copy of the notice to the lessee within ten days.

"It is impossible to know, evaluate and advise the service trade of all conceivable ways in which service might be done or of the possible hazardous consequences of each way. Accordingly, anyone who uses a service procedure or tool must first assure that neither personal safety nor vehicle safety will be jeopardized by the selected service methods."

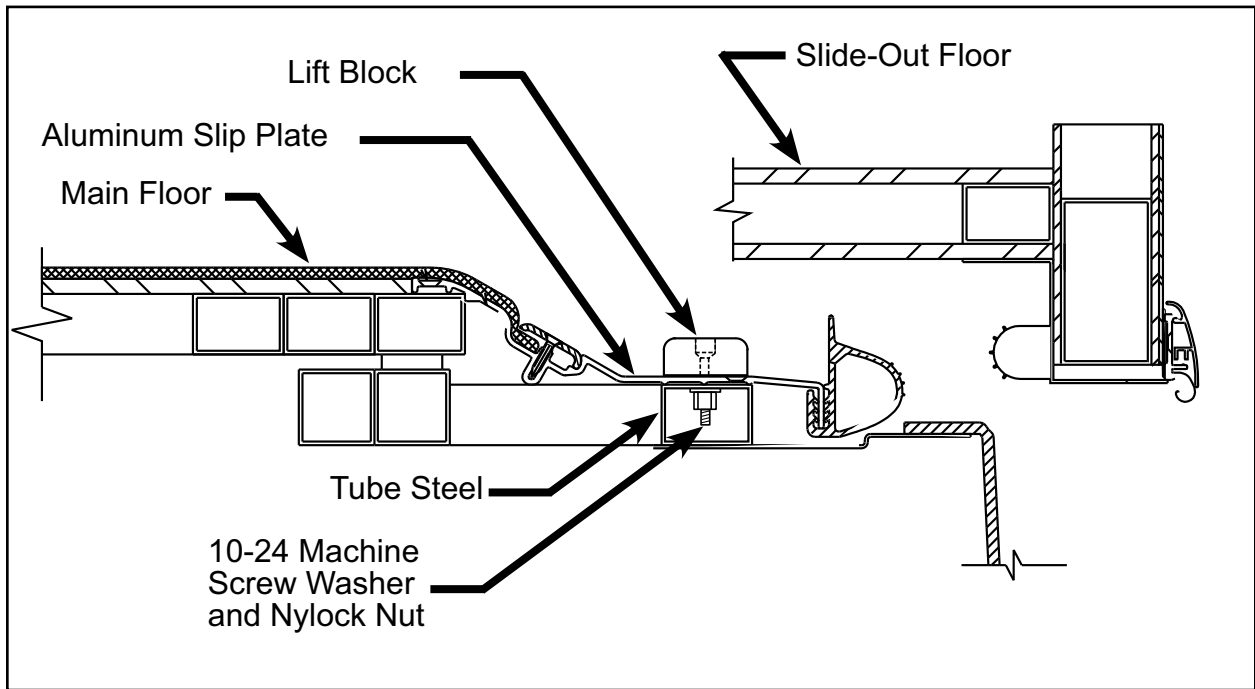


Figure 7

**PARTS:**

<u>Part No.</u>	<u>Description</u>	<u>Qty.</u>
507559	Lift Block	3
500822	Screw 10-24 x 1" Flat Head Phillips	6
500823	Nut, Nylock, Zinc Plated, 10-24	6
099482	1/4" flat washers	6

**TOOLS:**

- 3/8" Drill Motor
- 1/4" Twist Drill Bit
- 5/8" Twist Drill Bit with Shank to Fit Drill Motor
- 90 Degree Phillips Ratcheting Screw Driver
- 3/8" Deep Socket (1/4" drive) with Ratchet and 4" Extension
- Tape Measure
- White China Marker or Grease Pencil
- 1/8" Steel Plate or Scrap Ceramic Floor Tile for Drill Back-up

**WARRANTY LABOR ALLOWANCE:**

<u>Flat Rate Code:</u>	<u>Time</u>	<u>Description</u>
0159-41	2.0 hrs	Block, Lift, MH Slide-Out

*If you have questions regarding this Bulletin, contact Fleetwood's Dealer Technical Support at:*

800-816-9825

*Fleetwood Service Literature can be accessed at: <http://www.fleetwoodrvdealers.com>*

*This bulletin is supplied for technical information only and is not an authorization for repairs.*

Federal Law (Section 154 of the National Traffic and Motor Vehicle Safety Act of 1966) requires that: If you have received a notice of recall or failure to comply from Fleetwood or any component manufacturer, you must repair or otherwise correct the defects on vehicles remaining in your inventory, according to the notification, before selling or leasing the vehicles. Any vehicle lessor receiving this recall notice must forward a copy of the notice to the lessee within ten days.

"It is impossible to know, evaluate and advise the service trade of all conceivable ways in which service might be done or of the possible hazardous consequences of each way. Accordingly, anyone who uses a service procedure or tool must first assure that neither personal safety nor vehicle safety will be jeopardized by the selected service methods."